

Inquiring



*Building a
community
of life long
learners within
a caring environment*

How will I know how my child is doing?

The PYP promotes the use of a range of assessment strategies which are designed to give a clear picture of your child's progress. This progress will be reported to you, both orally and in writing via parent/teacher interviews and through sharing samples of your child's work.

Attitudes

What do we want students to feel, value and demonstrate? The programme promotes and fosters a set of attitudes that include tolerance, respect, integrity, independence, enthusiasm, empathy, curiosity, creativity, co-operation, confidence, commitment and appreciation.

What shall I do if I still have Questions?

If you would like to know more about the PYP programme, information can be found on the IBO website: www.ibo.org

Further information about Glendowie Primary PYP programme can be found on the school website or by contacting the Principal or PYP Co-ordinators.



Glendowie Primary School

217 Riddell Rd, Glendowie, Auckland, 1071
New Zealand

Ph/Fax: 0064 9 575-7374

Email: office@glendowieprimary.school.nz

www.glendowieprimary.school.nz

Glendowie Primary School

An Introductory Guide to:

THE INTERNATIONAL BACCALAUREATE PRIMARY YEARS PROGRAMME



AN INTERNATIONAL
BACCALAUREATE
WORLD SCHOOL



What is the Primary Years Programme?

The Primary Years Programme (PYP) is designed for students between the ages of 3 and 12 years. It is an international, transdisciplinary programme designed to foster the development of the whole child, not just in the classroom but also through other means of learning. The PYP focuses on the total growth of the developing child, touching hearts as well as minds and encompassing social, physical, emotional and cultural needs in addition to academic welfare.

The PYP combines the best research and practice from a range of national systems with a wealth of knowledge and experience from international schools to create a relevant and engaging educational framework for all children.

The International Baccalaureate Organisation aims to develop inquiring, knowledgeable and caring young people who help to create a better and more peaceful world through intercultural understanding and respect.

In 2006 Glendowie Primary was authorised to offer the Primary Years Programme of the International Baccalaureate Organisation.

What does Glendowie Primary hope to achieve through the PYP?

Through the PYP Glendowie Primary School aims to foster the following attributes and dispositions in our students. These attributes create the following profile of PYP students.

The Learner Profile

Inquirers	Thinkers
Communicators	Risk-Takers
Knowledgeable	Principled
Caring	Open-Minded
Balanced	Reflective

A Comprehensive Approach to Learning

The Primary Years programme offers a comprehensive approach to teaching and learning. It provides a complete curriculum model, which incorporates guidelines on what students should learn, as well as guidelines on teaching methodologies and assessment strategies.

The New Zealand Curriculum has eight learning areas which are; English, the arts, health and physical education, learning languages, mathematics and statistics, science, social sciences and technology.

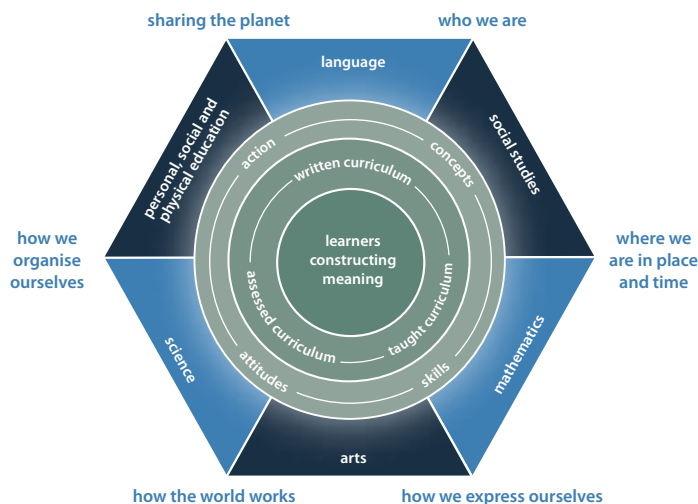
The Curriculum Model

At the heart of the Primary Years Programme's philosophy is a commitment to structured inquiry as the leading vehicle for learning.

Six transdisciplinary themes as shown on the outside of the diagram below, provide the framework for the exploration of knowledge. Teachers and students are guided by these themes as they design curricular units for exploration and study. Students explore subject areas through these themes, often in ways that transcend conventional subject boundaries. In the process, they develop an understanding of important concepts, acquire essential skills and knowledge, develop particular attitudes and learn to take socially responsible action.



Primary Years Programme



What does this mean for the Teaching and Learning at Glendowie Primary School

The programme will support our Glendowie Primary Mission Statement of "I Care".

School Vision Statement:

Glendowie Primary School is an "I Care" school which places the highest priority on providing a quality teaching and learning programme. Our students will become confident, compassionate, life long learners, encouraged to achieve their full potential by actively participating in our country and as citizens of the world.

The PYP will define a balanced programme of concepts, knowledge, skills, attitudes and actions for our students across all subject areas.

The school will develop a whole school programme of inquiry which provides units of work and focused resourcing for each year level.

The school will continue its focus on literacy and numeracy skills and will seek additional opportunities to integrate these into the units of inquiry. The PYP philosophy and characteristics of learning will enhance this focus.

The PYP programme will promote good teaching practice including focused professional development for teachers.

The PYP programme will provide encouragement for our students to become actively involved in their learning and to become life long learners.

The school will offer our children from Yr. 3 - 8 an opportunity to study a second language. Children learn to communicate in another language and also gain an understanding of the cultures in which the language is spoken.

The PYP programme will place an emphasis on the children's understanding of the world around them and will encourage the values and attitudes required to become caring and valued citizens of society.

